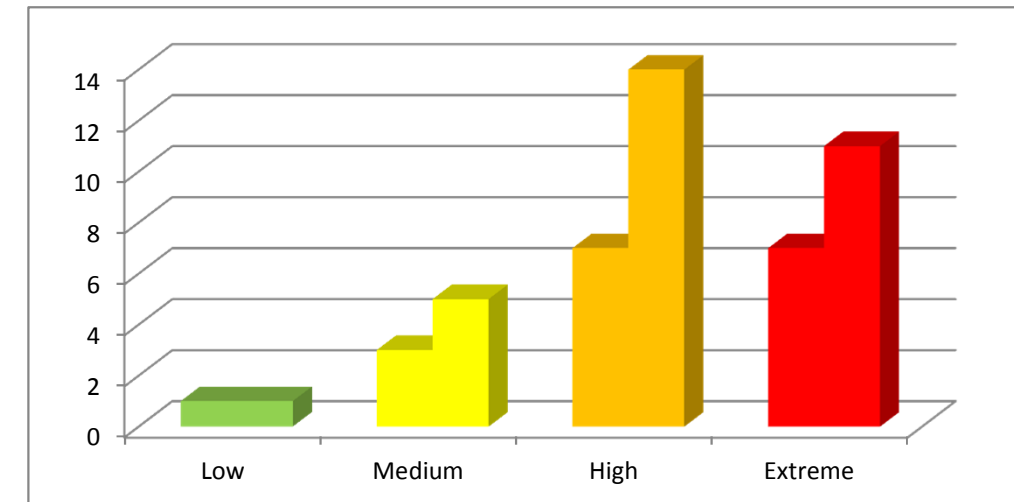


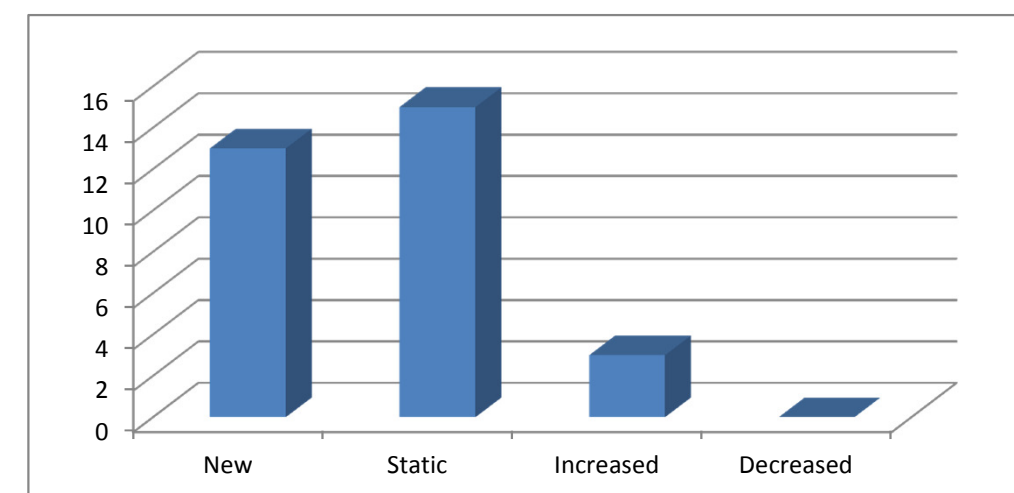
Current Ref:	Brief Description:	Current Risk Score Q2 2015/16	Spark	DoT	Rational for Current Score
QPS04 / PC01	Primary Care	25			Recent CQC and GMS reviews have highlighted the concern around the suitability of some Practices to deliver Primary Care. Long-term transformation project results yet to be realised.
QPS09	Care Homes (CHC) ArdenGem	25			ArdenGem have given notice on the CHC contract and so the CCG must source alternative arrangements for CHC Services.
QPS05	EEAST	20			Current performance data is concerning, particularly around Red 2 calls, Late SI reports and number of SIs (less than last year, so could indicate under reporting). EEAST currently implementing new CAD and appointed new Clinical Lead.
QPS08	SEEDS	16			SEEDS no longer provide the OOO Service
GV05	GP Succession Planning	16			The CCG is in the early stages of succession planning.
PPI01	Lay Member PPI Vacancy	16			The CCG currently has a vacancy for the Lay Member PPI, but is working to recruit a new member.
QPS11	Safeguarding Children	16		NEW	Some uncertainty as to the current control arrangements, being reviewed. Some concerns raised via CQC report on Looked After Children (in provider organisations), final report is awaited.
QPS12	Safeguarding Adults	16		New	Some uncertainty as to the current control arrangements, being reviewed. To work with the LA to review concerns and support investigations from a health perspective
QPS13	Out of Hours	16		NEW	Service now transferred to IC24, relatively smooth transition, however some performance issues identified in SI processes and early days. So risk remains high.
FM01	QIPP	15			Re-classified given the new funding regime and resulting pressure on financial controls. Previous reduction in risk due to meeting year-end targets.
FM02	Financial Balance	15			Robust controls are in place, however, we are at the outset of the financial year and those plans are currently being implemented.

There are currently 31 risks held within the overarching Board Assurance Framework (BAF) and Corporate Risk Registers (CRR). Both the BAF and CRR are provided to the Board for information. Risks scoring between 1 and 12 are included on the Corporate Risk Register and are managed within the CCG Directorates. However, risks classified as Extreme (scoring 15 and above) are included on the CCG Board Assurance Framework, for which this is the 'dashboard'.



11 of those risks are rated Extreme and therefore need to be reported to the Board as the CCGs strategic risks. Those key risks relate to (in priority order):

- The suitability and sustainability of Primary Care
- Continuing Healthcare - ArdenGem
- Services provided by the East of England Ambulance Service NHS Trust
- Out of Hours services where SEEDS has been decommissioned (Risk being removed)
- Out of House services with IC24 (service bedding in)
- GP Succession Planning
- The current vacancy for the Lay Member (PPI)
- Safeguarding Children
- Safeguarding Adults
- The full and final achievement of the QIPP target.
- Achieving Financial Balance



The high number of new risks relate to the development of the Board assurance framework being aligned to Directorate Risks in addition to the strategic risks and therefore promotes proactive risk identification moving the CCG away from reactive reporting.